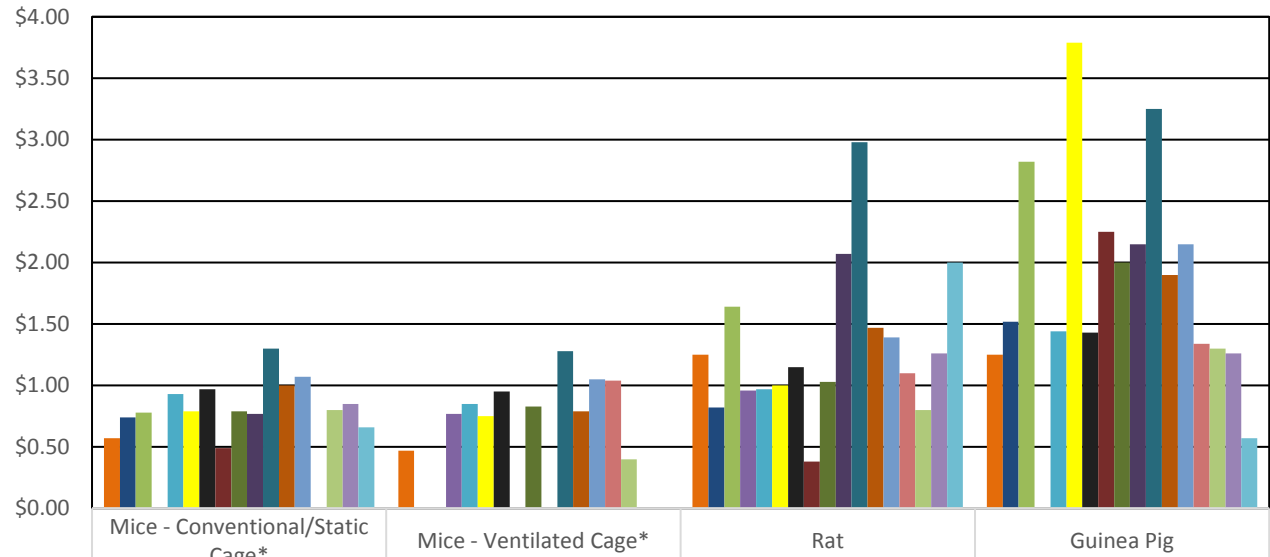


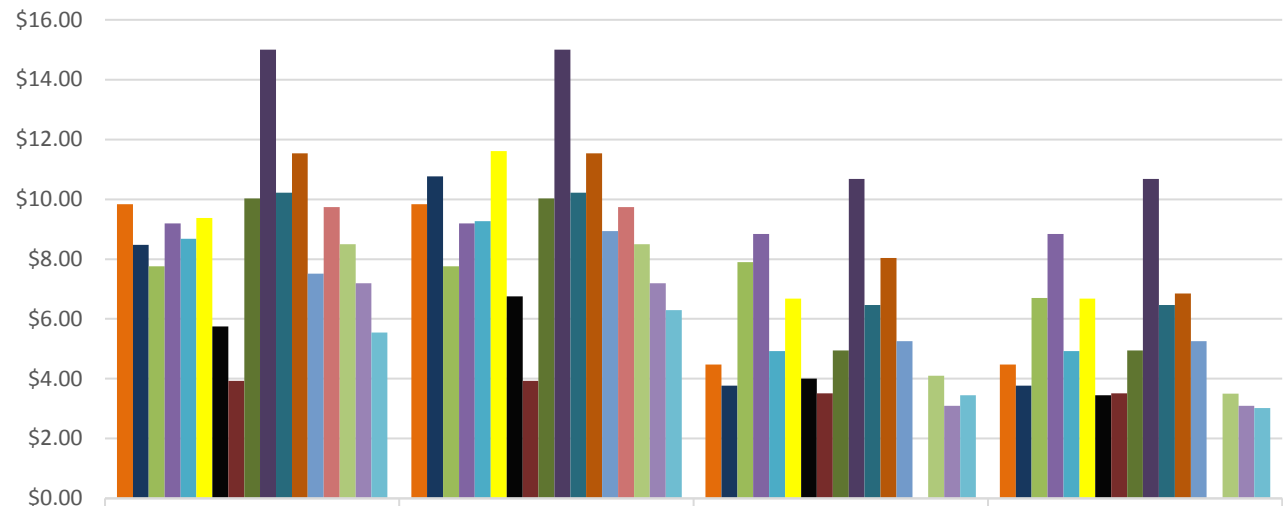
FY16/17 Comparison of Rodent Per Diem Rates with Other Institutions



	Mice - Conventional/Static Cage*	Mice - Ventilated Cage*	Rat	Guinea Pig
University of Illinois Urbana-Champaign	\$0.57	\$0.47	\$1.25	\$1.25
University of California-Davis Teaching & Research ACS	\$0.74	0	\$0.82	\$1.52
Colorado State University	\$0.78	0	\$1.64	\$2.82
Cornell	0	\$0.77	\$0.96	0
University of Florida	\$0.93	\$0.85	\$0.97	\$1.44
University of Georgia	\$0.79	\$0.75	\$1.00	\$3.79
Kansas State University	\$0.97	\$0.95	\$1.15	\$1.43
Louisiana State University	\$0.49	0	\$0.38	\$2.25
Michigan State University	\$0.79	\$0.83	\$1.03	\$2.00
University of Minnesota	\$0.77	0	\$2.07	\$2.15
North Carolina State University	\$1.30	\$1.28	\$2.98	\$3.25
Ohio State University	\$1.00	\$0.79	\$1.47	\$1.90
Oklahoma State University	\$1.07	\$1.05	\$1.39	\$2.15
Oregon State University	0	\$1.04	\$1.10	\$1.34
Purdue	\$0.80	\$0.40	\$0.80	\$1.30
Texas A&M University	\$0.85	0	\$1.26	\$1.26
Washington State University	\$0.66	0	\$2.00	\$0.57

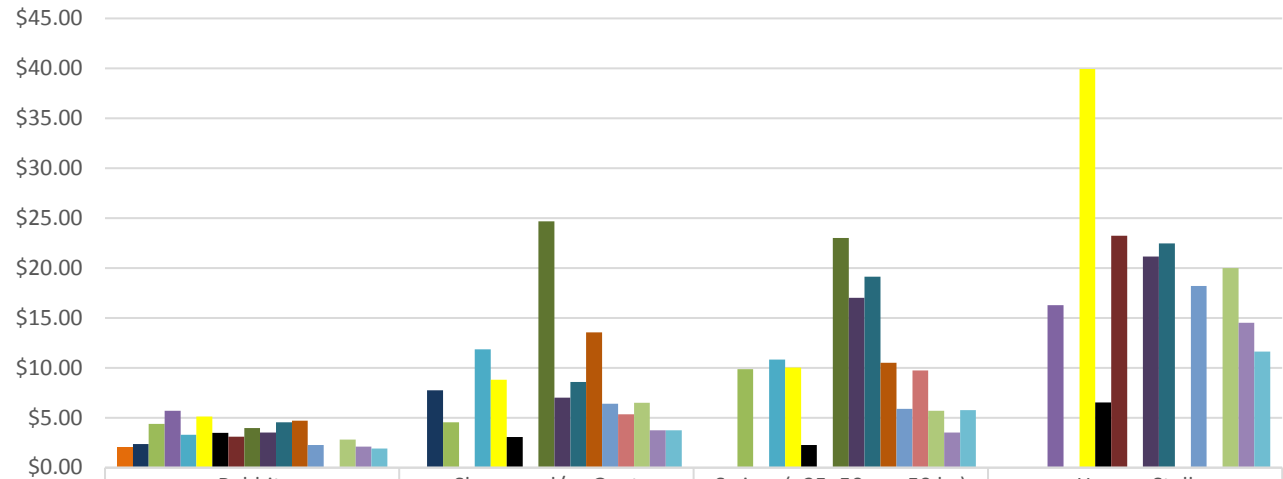
* Rates displayed for mice are cage rates.

FY16/17 Comparison of Dog & Cat Per Diem Rates with Other Institutions



	Dog - Run (Group or <30lb)	Dog - Run (Single or >30lb)	Cat - Individual Cage	Cat - Group Housing (≥4 cats)
University of Illinois Urbana-Champaign	\$9.84	\$9.84	\$4.48	\$4.48
University of California-Davis Teaching & Research ACS	\$8.48	\$10.77	\$3.77	\$3.77
Colorado State University	\$7.76	\$7.76	\$7.90	\$6.70
Cornell	\$9.19	\$9.19	\$8.84	\$8.84
University of Florida	\$8.68	\$9.27	\$4.92	\$4.92
University of Georgia	\$9.38	\$11.61	\$6.68	\$6.68
Kansas State University	\$5.75	\$6.75	\$4.00	\$3.45
Louisiana State University	\$3.93	\$3.93	\$3.51	\$3.51
Michigan State University	\$10.03	\$10.03	\$4.95	\$4.95
University of Minnesota	\$15.00	\$15.00	\$10.68	\$10.68
North Carolina State University	\$10.22	\$10.22	\$6.46	\$6.46
Ohio State University	\$11.54	\$11.54	\$8.04	\$6.85
Oklahoma State University	\$7.51	\$8.94	\$5.26	\$5.26
Oregon State University	\$9.74	\$9.74	0	0
Purdue	\$8.50	\$8.50	\$4.10	\$3.50
Texas A&M University	\$7.19	\$7.19	\$3.09	\$3.09
Washington State University	\$5.55	\$6.29	\$3.45	\$3.02

FY16/17 Comparison of Rabbit, Sheep and/or Goat, Swine and Horse Per Diem Rates with Other Institutions



	Rabbit	Sheep and/or Goat	Swine (>25<50 or <50 kg)	Horse - Stall
University of Illinois Urbana-Champaign	\$2.05	0	0	0
University of California-Davis Teaching & Research ACS	\$2.36	\$7.76	0	0
Colorado State University	\$4.39	\$4.56	\$9.86	0
Cornell	\$5.70	0	0	\$16.29
University of Florida	\$3.29	\$11.86	\$10.83	0
University of Georgia	\$5.12	\$8.80	\$10.04	\$39.92
Kansas State University	\$3.50	\$3.06	\$2.28	\$6.52
Louisiana State University	\$3.09	0	0	\$23.24
Michigan State University	\$3.96	\$24.69	\$23.02	0
University of Minnesota	\$3.51	\$7.02	\$17.03	\$21.15
North Carolina State University	\$4.54	\$8.59	\$19.13	\$22.45
Ohio State University	\$4.70	\$13.54	\$10.50	0
Oklahoma State University	\$2.26	\$6.41	\$5.90	\$18.20
Oregon State University	0	\$5.36	\$9.74	0
Purdue	\$2.80	\$6.50	\$5.70	\$20.00
Texas A&M University	\$2.10	\$3.75	\$3.52	\$14.50
Washington State University	\$1.92	\$3.74	\$5.77	\$11.64